

## PATCHCRETE APPLICATION

**PATCHCRETE** is a pre-bagged Resurfacing & Coating Mix with high viscosity. It is used for the restoration of deteriorated asphalt, concrete, metal, masonry and brick surfaces. Applied with a roller, screed w/ vibrator, or with a brush. Polishing after placement is also an option as an enforcing treatment.

There is no dilatation and absolutely NO shrinkage cracks. No curing is required after application with minimal thickness of 8 mm or  $\frac{5}{16}$ ". Applied as a layer or cast in place, PATCHCRETE has no expansion in either the plastic or hardening phase. A layer of PATCHCRETE is water impermeable under 8 bar hydraulic pressure and stable in aggressive and highly acidic environments at pH of  $<3$ .

### SURFACE PREPARATION

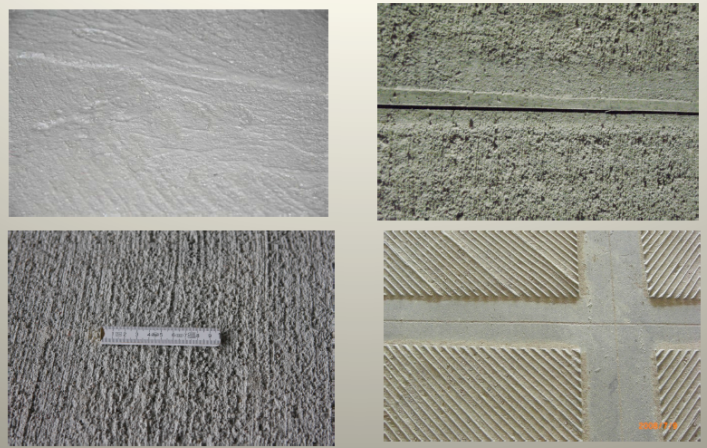
1. Clean the surface before application with water to remove any loose contaminations. Any extensive areas of paint, oil, etc. should be ground off before application. Surface should be well soaked and clean and not "thirsty" for water.
2. After cleaning with water, allow the area to dry naturally for at least 45 minutes before applying PATCHCRETE with a layer thickness of 1.5 mm to 5 mm or at  $\frac{1}{16}$ " to  $\frac{1}{4}$ ".

### PATCHCRETE INSTALLATION

1. Batch must be no smaller than 50 Lbs. (22.7 Kg).
2. For small batches (50 lbs) use a drill mixer. Add 0.7 Gallons or 90 OZ [5.87 Lbs] of water per every loaded bag of PATCHCRETE.
3. Mix for 5 minutes.
4. The batch will look stiff, but do not add more water.
5. Distribute the layer by screed with vibrator.
6. Hardening time is 4 hours in normal conditions.
7. Finishing: for a smooth surface, polish with a wet trowel (dip it in water), but don't spray water directly onto the layer.

### ESSENTIALS AND CURING

1. After application, **do not** provide curing with water and do not apply any curing compounds.
2. **Do not spray water** onto the fresh PATCHCRETE surface!
3. Standard results by 28 days:  
Compressive Strength at 5,700 ÷ 7,000 PSI or 40 ÷ 49 MPa  
Tensile Strength at 1,140 PSI or 8 MPa  
Water impermeability at 1,550 PSI or W12



### FIELDS OF APPLICATION:

Basements and garage floors, driveways, swimming pools, septic tanks, gas stations, agricultural and chemical facilities, parking lots, and anywhere where surface hardness and resistance to liquids and gases are required to be the best.

< **Examples of different Patchcrete surface finishes**